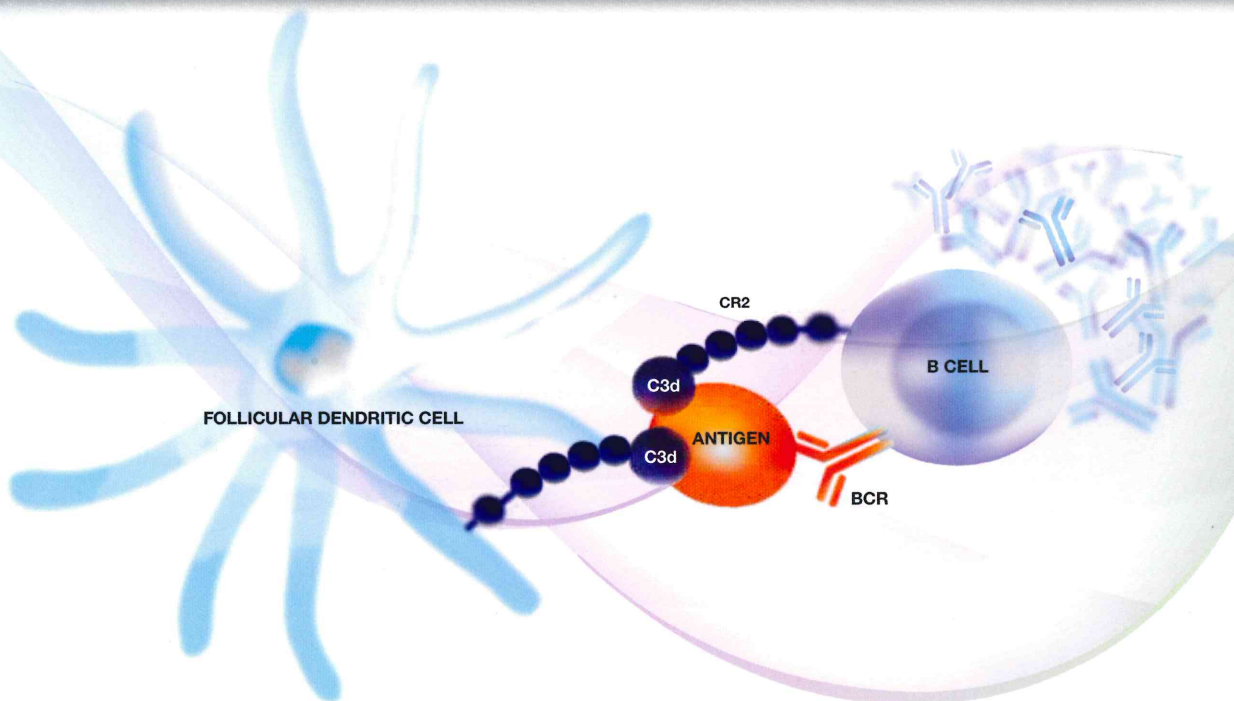
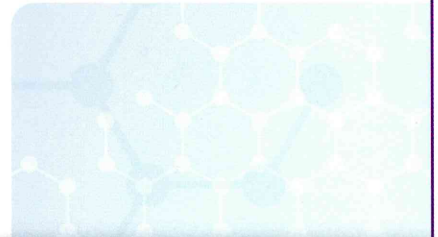




IMMUCOR.

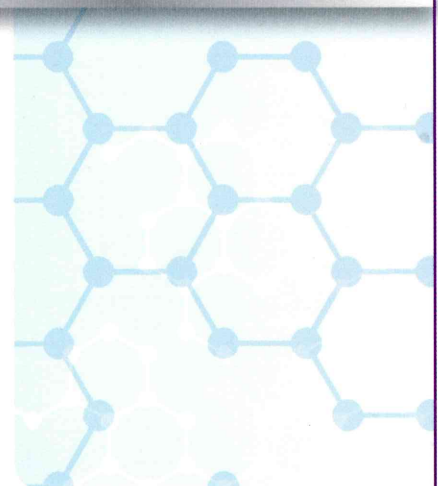
LIFECODES C3d Assay

Detection by PE Conjugated Anti-C3d



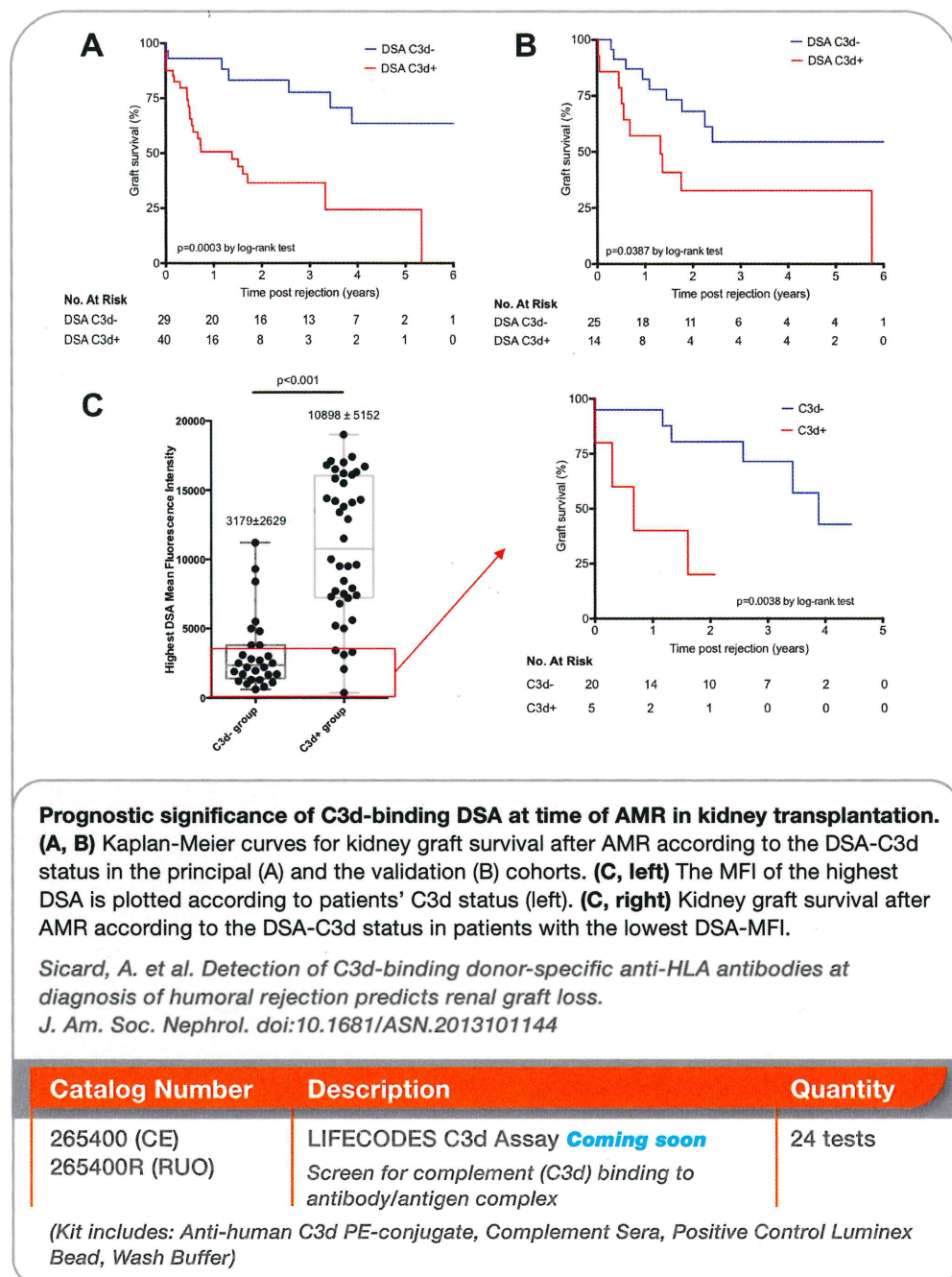
BENEFITS & FEATURES

- Identifies complement binding antibodies
- Internal positive control bead
- Results integrated into MATCH IT!® Analysis software
- Utilizes Luminex® xMAP® technology



LIFECODES C3d Assay | Detection by PE Conjugated Anti-C3d

LIFECODES C3d Assay provides a measure of the binding and processing of complement to one of its end products - C3d. When combined with our LIFECODES LSA™ Single Antigen Kits, the assay offers a simple method for the detection of complement binding to HLA antibodies.



In addition to modulating innate immunity, complement modulates B and T cell functions. C3d, the split product of C3, has been shown to have a significant effect on B cells that are the effector cells responsible for generating the humoral response. C3d is the primary ligand for complement receptor 2 (CR2/CD21).

Murata, K., Baldwin W.M., Transplantation Reviews 23:139-150 (2009)

Measuring the activation of complement components such as C3d or C4d is a more accurate way to evaluate complement fixation than measuring cell lysis (CDC).

Almahri et al. Tissue antigens (2012) 80:404-15

"New findings now show that the presence of C3d-binding donorspecific anti-HLA antibodies (DSAs) at the time of AMR strongly predicts kidney allograft loss and may enable accurate risk stratification of these patients."

NATURE REVIEWS, NEPHROLOGY, VOLUME 10, OCTOBER 2014



To learn more,
contact us:

US:
t 1.888.329.0255
e lifecodes@immucor.com

Europe:
t +32(0)3 385 47 91
e eulifecodesordering@immucor.com

Distributed by:



www.dlongwood.com