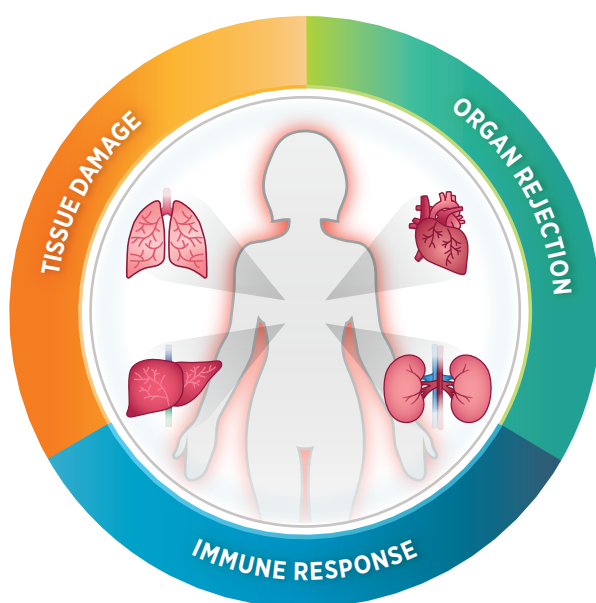


# nCounter® Human Organ Transplant Panel

## Gene Expression Panel

Organ Rejection • Immune Response • Tissue Damage

Comprehensively profile the immune response to transplanted tissue and the pathways behind organ rejection. Analyze gene expression of hundreds of genes to identify biomarkers for rejection and uncover the mechanisms behind toxicity and tissue damage brought on by immunosuppressive drugs. Develop signatures for rejection pre- and post-transplant to better understand transplant biology.



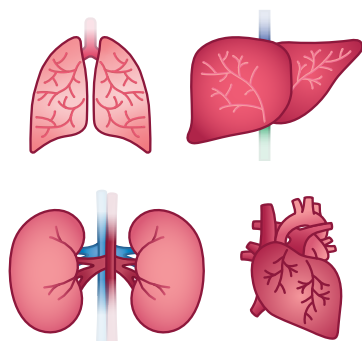
### Product Highlights

- Profile 770 genes across 37 annotated pathways
- Study the immune response to transplanted tissue and analyze pathways involved in immunosuppression
- Discover biomarkers for organ rejection and tissue damage for kidney, heart, liver and lung
- Understand mechanisms behind drug-induced toxicity
- Identify BK Polyomavirus, Cytomegalovirus, and Epstein-Barr virus
- Quantify the relative abundance of 14 different immune cell types

Feature	Specifications
Number of Targets	770 (Human), including internal reference genes
Standard Input Material (No amplification required)	25-300 ng
Panel Standard	Synthetic oligonucleotide pool corresponding to all panel gene targets used for normalization.
Sample Input - Low Input	As little as 1 ng with nCounter Low Input Kit (sold separately)
Sample Type(s)	Cultured cells/cell lysates, sorted cells, FFPE-derived RNA, total RNA, fragmented RNA, PBMCs, Whole Blood/Plasma
Customizable	Add up to 55 unique genes with Panel-Plus and up to 10 custom protein targets
Time to Results	Approximately 24 hours
Data Analysis	nSolver™ Analysis Software (RUO)

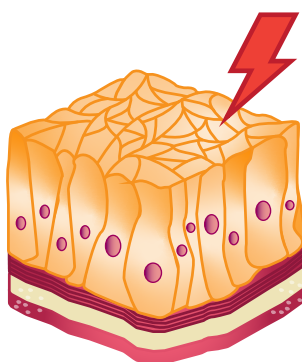
## Key Applications with the nCounter Human Organ Transplant Panel

### ORGAN REJECTION



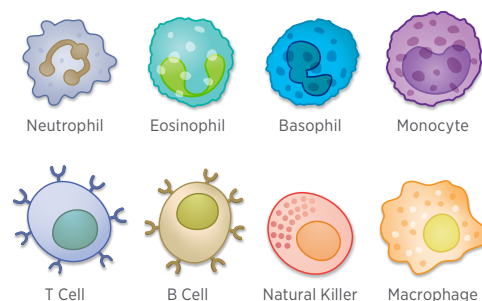
- Identify different stages of rejection, including hyperacute, accelerated, acute, and chronic organ rejection
- Develop signatures for active organ rejection

### TISSUE DAMAGE



- Study post-transplant organ health
- Understand mechanisms of immunosuppressive drug-induced toxicity

### IMMUNE RESPONSE



- Profile innate and adaptive immune response
- Identify viruses
- Potentially predict risk of rejection

## Human Organ Transplant Panel Functional Annotations

Functional annotations for different pathways and processes were assigned to the genes in the Human Organ Transplant Panel. The pathways and processes that are included in this panel provide a comprehensive view of transplant immunology and organ rejection.

Annotation		
Adaptive Immune System	Inflammasomes	TGF-beta Signaling
Angiogenesis	Innate Immune System	Th1 Differentiation
Apoptosis & Cell Cycle Regulation	Lymphocyte Trafficking	Th17 Differentiation
Autophagy	MAPK	Th17 Mediated Biology
B-Cell Receptor Signaling	Metabolism	Th2 Differentiation
Cell-ECM Interaction	MHC Class I Antigen Presentation	Tissue Homeostasis
Chemokine Signaling	MHC Class II Antigen Presentation	TNF Family Signaling
Complement System	mTOR	Toll Like Receptor Signaling
Cytokine Signaling	NF-kappaB Signaling	Treg Differentiation
Cytosolic DNA Sensing	NLR Signaling	Type I Interferon Signaling
Cytotoxicity	Oxidative Stress	Type II Interferon Signaling
Epigenetics & Transcription	T-Cell Checkpoint Signaling	
Hematopoiesis	T-Cell Receptor Signaling	

## Viral Identification

Solid organ and hematopoietic transplant recipients are at increased risk for developing complications from opportunistic viral infections and may even inherit a viral infection from the donor. Knowing if a viral infection is present can be essential to understanding both the immune response and the potential impact of immunosuppression. Included in the Human Organ Transplant panel are probes specific for the detection of BK Polyomavirus, Cytomegalovirus (CMV) and Epstein-Barr virus (EBV)

Virus	Gene(s) Detected
BK Polyomavirus	VP1, Large T Antigen
CMV	UL83
EBV	LMP2

## NHP Compatibility

Probes included in the Human Organ Transplant Panel have been confirmed to have high homology with non-human primates, providing a valuable tool for translational comparative studies using both human and non-human samples.

### Homology with Cynomolgus Monkey

% Identity	# Genes
>95%	682
>90%	730
>85%	740
>80%	743

## Immune Cell Profiling Feature

Genes included in the Human Organ Transplant Panel provide unique cell profiling data to measure the relative abundance of 14 different human immune cell types<sup>1</sup>. The table below summarizes each cell type represented by gene content in the panel, as qualified through biostatistical approaches and selected literature in the field of immunology.

### Relative Cell Type Abundance

Cell Type	Associated Human Genes
B cells	BLK, CD19, FAM30A, FCRL2, MS4A1, TNFRSF17, PNOC, SPIB, TCL1A
CD45	PTPRC
CD8 T cells	CD8A, CD8B
Cytotoxic Cells	CTSW, GNLY, GZMA, GZMB, GZMH, KLRB1, KLRD1, KLRK1, PRF1, NKG7
Dendritic Cells	CCL13, CD209, HSD11B1
Exhausted CD8	CD244, EOMES, LAG3, PTGER4
Macrophages	CD163, CD68, CD84, MS4A4A

Cell Type	Associated Human Genes
Mast cells	MS4A2, TPSAB1, CPA3, HDC, TPSAB2
Neutrophils	CSF3R, S100A12, CEACAM3, FCAR, FCGR3A, FCGR3B, FPR1, SIGLEC5
NK CD56dim cells	IL21R, KIR2DL3, KIR3DL1, KIR3DL2
NK Cells	NCR1, XCL2, XCL1
T cells	CD3D, CD3E, CD3G, CD6, SH2D1A, TRAT1
Th1 Cells	TBX21
Treg	FOXP3

<sup>1</sup> Danaher P. et al. Gene expression markers of Tumor Infiltrating Leukocytes JITC 2017

To view the annotated gene lists for the Human Organ Transplant Panel, visit:  
<https://www.nanostring.com/transplant>

## nSolver™ Analysis Software

NanoString offers advanced software tools that address the continuous demands of data analysis and the need to get simple answers to specific biological questions easy. Genes included in the Human Organ Transplant panel are organized and linked to various advanced analysis modules to allow for efficient analysis of the 30 pathways involved in transplant immunology.

## Advanced Analysis Modules available for Human Organ Transplant:

- Normalization
- Quality Control
- Individual Pathway Analysis
- Cell Profiling
- Differential Expression
- Gene Set Analysis
- Built-in compatibility for Panel-Plus and Protein analysis

## Ordering Information

Gene Expression Panels arrive ready-to-use and generally ship within 24 hours following purchase

Product	Product Description	Quantity	Catalog Number
nCounter Human Organ Transplant Panel + Panel Standard	Includes 760 genes; 10 internal reference genes for data normalization. The Human Organ Transplant panel includes a Panel Standard containing a pool of synthetic DNA oligonucleotides that correspond to the target sequence of each of the 770 unique probe targets in the panel. This allows for normalization for possible user, instrument, and lot-to-lot variation.	12 Reactions	XT-CSO-HOT1-12
nCounter Master Kit (MAX or FLEX Systems) Reagents and Cartridges	Reagents, cartridges, and consumables necessary for sample processing on nCounter MAX and FLEX Systems	12 Reactions	NAA-AKIT-012
nCounter SPRINT Cartridge 1 Cartridge, 12 lanes	Sample Cartridge for nCounter SPRINT System	12 Reactions	SPRINT-CAR-1.0
nCounter SPRINT Reagent Pack	nCounter SPRINT Reagent Pack containing Reagents A, B, C, and Hybridization Buffer	192 Reactions	SPRINT-REAG-KIT

## Selected Panel References

1. Danaher, P et al. Gene Expression Markers of Tumor Infiltrating Leukocytes. J Immunother Cancer. 2017;21(5):18.
2. Reeve, J et al. Generating automated kidney transplant biopsy reports combining molecular measurements with ensembles of machine learning classifiers. Am J Transplant. 2019;1-13.
3. Wu, H et al. Single-Cell Transcriptomics of a Human Kidney Allograft Biopsy Specimen Defines a Diverse Inflammatory Response. J Am Soc Nephrol. 2018;29:2069-80.

For more information, please visit [nanosttring.com](https://nanosttring.com)

### NanoString Technologies, Inc.

530 Fairview Avenue North  
Seattle, Washington 98109  
T (888) 358-6266  
F (206) 378-6288  
nanosttring.com  
info@nanosttring.com

### Sales Contacts

United States [us.sales@nanosttring.com](mailto:us.sales@nanosttring.com)  
EMEA: [europe.sales@nanosttring.com](mailto:europe.sales@nanosttring.com)  
Asia Pacific & Japan [apac.sales@nanosttring.com](mailto:apac.sales@nanosttring.com)  
Other Regions [info@nanosttring.com](mailto:info@nanosttring.com)

FOR RESEARCH USE ONLY. Not for use in diagnostic procedures.

©2020 NanoString Technologies, Inc. All rights reserved. NanoString, NanoString Technologies, the NanoString logo, nCounter, IO 360 and nSolver are trademarks or registered trademarks of NanoString Technologies, Inc., in the United States and/or other countries.